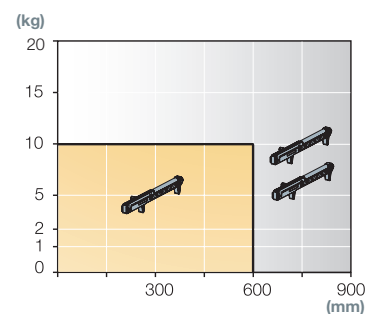


- Works with most roller runner drawer slides
- Easy, intuitive mounting
- Smooth soft closing action independent of drawer hardware
- Optimal closing speed
- Non handed design

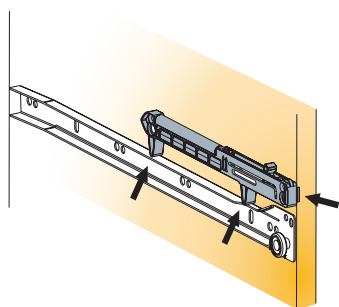
Capacity chart



Mount 1 or 2 Titusoft mechanisms depending on drawer weight and width

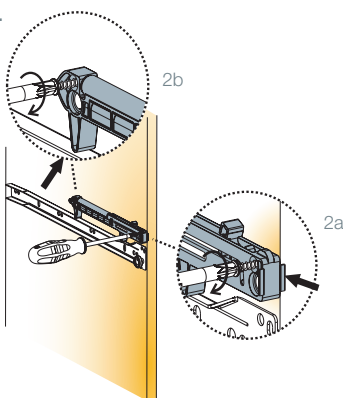
Mounting details

1.



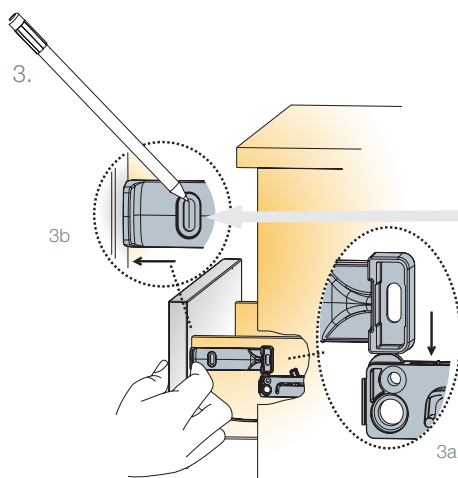
Position the Titusoft mechanism on the top of the drawer slide

2.



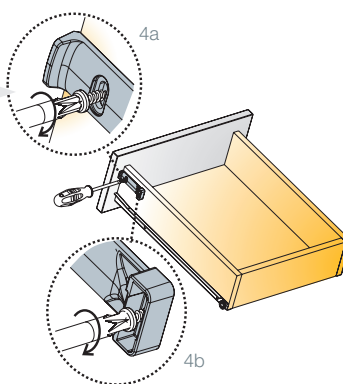
Fix with 2 screws L=20mm

3.



1. Rest the activator against the drawer front
2. Align the vertical position of the activator with the top of the Titusoft mechanism and mark the screw locations

4.



Fix with 2 screws L=12mm



Further explanations → go to <http://www.youtube.com/watch?v=U3aS2r6KC6k>

A trial mounting is always recommended. Please contact Titus Group or your local distributor for further technical assistance.