

KRISTAL is the new glass shelf support conceived by Italiana Ferramenta Srl, boasting a unique design with its modern and fresh aesthetics.

KRISTAL is a safe shelf support that allows the furniture to be delivered with the shelves pre-mounted. Provided with two layers of soft engineering plastic on both the upper and the lower side, it perfectly locks the shelf, and reduces the risk of damage to the shelf.

Locking and unlocking the shelf is absolutely fast and easy with **KRISTAL**.

KRISTAL is available in 2 versions:

- For Glass Shelves 5-6mm thick
- For Glass Shelves up to 8mm thickness

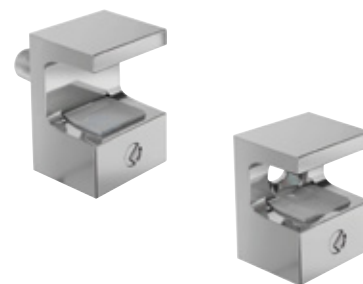
Four different types of installation available:

- Ø 5mm Pin
- Ø 3mm Pin
- With 3,5x12mm countersunk head wood screw
- With M4x16mm countersunk head screw

Zinc alloy and engineering plastic rubber

In accordance with the regulation UNI EN 14749/05

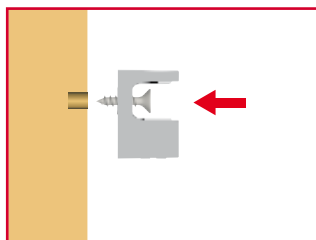
REGISTERED DESIGN



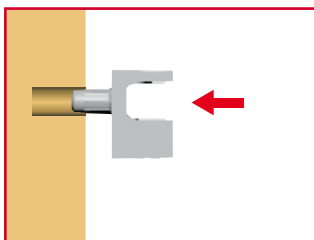
ASSEMBLING

1

ASSEMBLING WITH SCREW FIXING

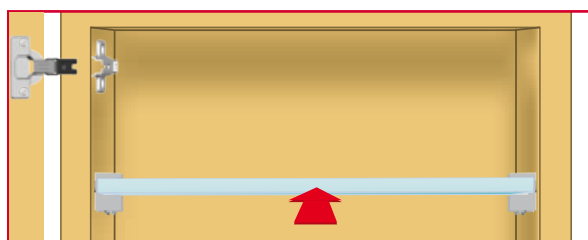


ASSEMBLING WITH SMOOTH PIN



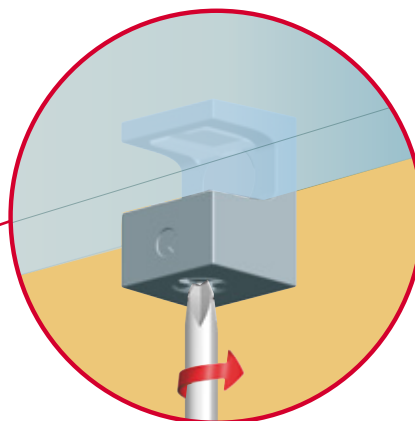
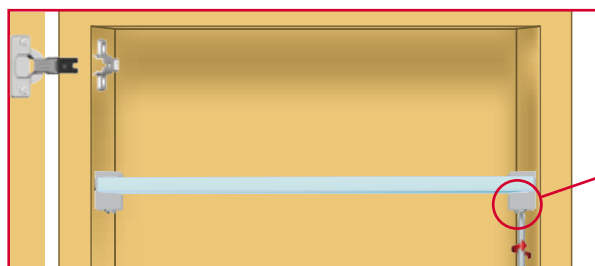
2

SLIDE THE GLASS HORIZONTALLY INTO THE KRISTAL "U" SOCKET BEFORE ASSEMBLING THE DOOR



3

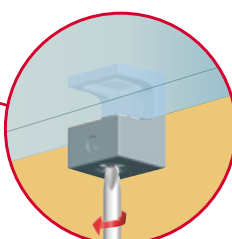
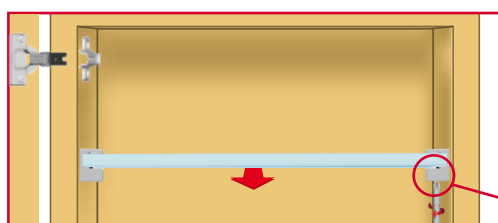
SECURE THE GLASS IN POSITION BY SCREWING CLOCKWISE THE METAL LOCKING INSERT UNTIL THE GLASS IS SAFELY LOCKED AND ASSEMBLY THE DOOR.



SHELF ASSEMBLING AND REPOSITIONING

SHELF REMOVAL

REMOVE THE DOOR FIRST AND UNSCREW THE METAL LOCKING INSERT ANTICLOCKWISE UNTIL YOU CAN EASE THE GLASS OUT.



SHELF REPOSITIONING

TO REPOSITION THE SHELF REPEAT OPERATIONS AS SHOWN IN PCS. 2-3.

