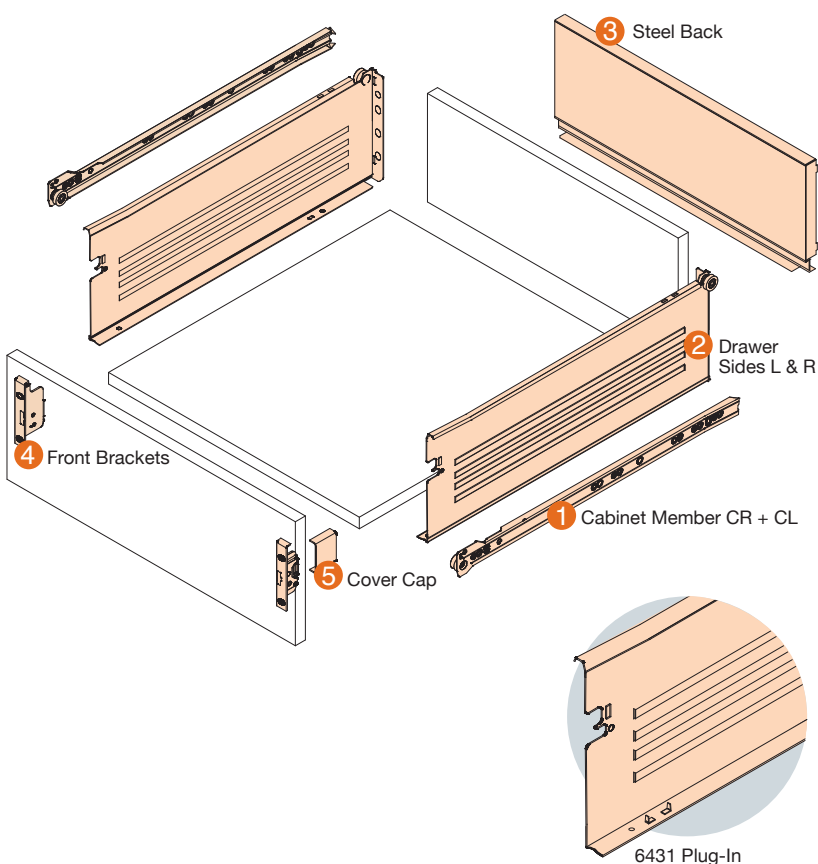


InnoBox 6430 / 6431 Drawer Series



- Single Extension
- Metal drawer side height 150 mm
- Epoxy coated
- Load capacity of 30 kgs
- Self closing feature
- Flexible 2-dimensional front adjustment
- Side clearance 31mm
- Double out stop safety feature
- Locked-in position when extended



Article no. for

1 Cabinet Member CR & CL

2 Drawer Sides L & R

Colors : R9001 Cream • R9010 White • R7004 Grey • R9006 Grey Metallic

Drawer Length	Screw-On	Plug-In
350mm	6430.35	6431.35
400mm	6430.40	6431.40
450mm	6430.45	6431.45
500mm	6430.50	6431.50
550mm	6430.55	6431.55

3 Steel Back

Colors : R9001 Cream • R9010 White • R7004 Grey • R9006 Grey Metallic

Cabinet Width (16mm Side Panel)	Standard
400mm	QMB.43.336
450mm	QMB.43.386
500mm	QMB.43.436
550mm	QMB.43.486
600mm	QMB.43.536
700mm	QMB.43.636
800mm	QMB.43.736

4 Standard Front Brackets

	Screw-on Ø3.5 x 15mm (CBS)	QFB.110RH QFB.110LH
	Press-in Ø10.5 x 11.5mm	QFB.120RH QFB.120LH
	Expansion Ø10 x 11.5mm	QFB.130RH QFB.130LH

Nickel-plated steel

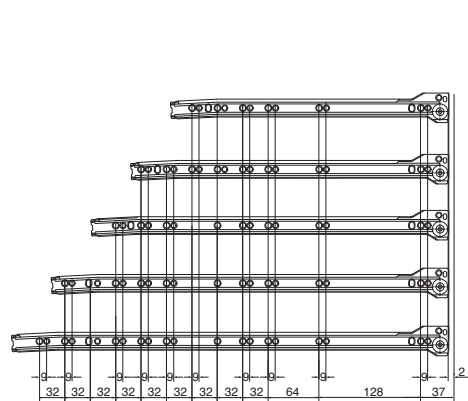
5 Standard Cover Cap

Colors : R9001 Cream • R9010 White • R7004 Grey

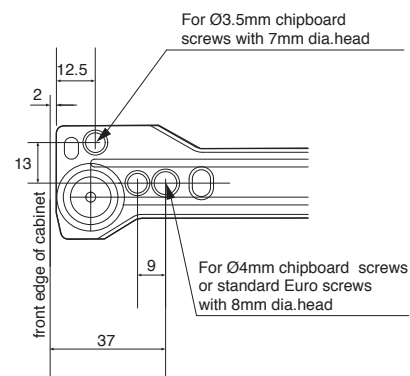
	QPC.160
--	---------

Cabinet member fixing positions

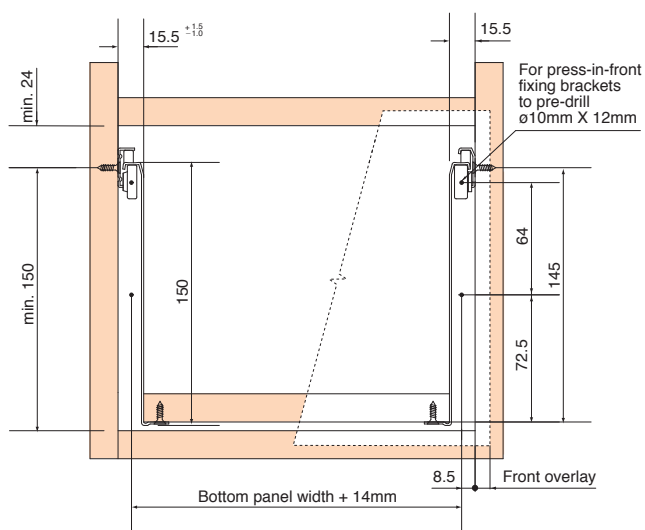
Drilling pattern for cabinet member



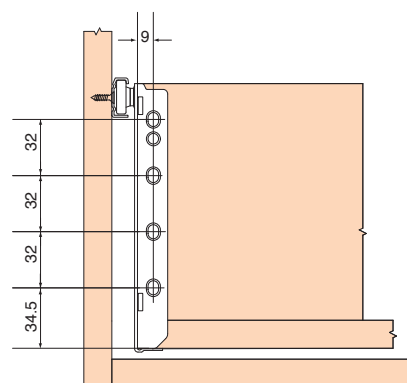
Drawer Length	Min. internal cabinet depth	Loss of extension
350mm	353mm	85mm
400mm	403mm	85mm
450mm	453mm	95mm
500mm	503mm	102mm
550mm	553mm	110mm



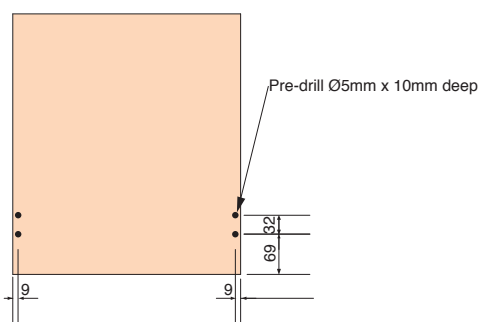
Front installation dimensions



Back installation dimensions



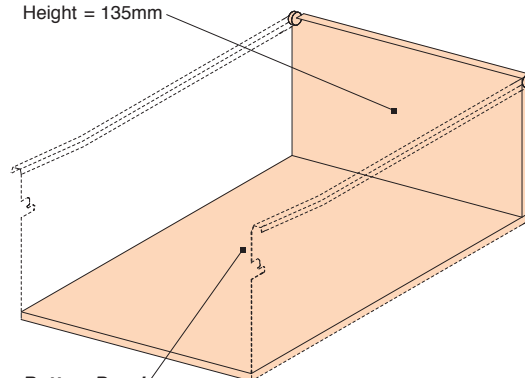
Plug-In drilling dimension for bottom panel



Cutting dimensions for 16mm chipboard

Back Panel

Width = Internal cabinet width - 31mm
Height = 135mm



Bottom Panel

Width = Internal cabinet width - 31mm
Length (Wooden back) = Drawer length - 2mm
Length (Steel back) = Drawer length - 12mm