

# KRABY LID STAY

long size Length=355mm Automatic S.F. version

ITALIANA<sup>®</sup>  
ferramenta

**KRABY** is the new gas and oil stay conception with a completely new design to open flap doors. It has been conceived to be installed by using standard automatic drilling processes. It is available in several newton strengths to suit small - medium - big - maxi size doors. It can be fixed directly on solid doors or wider aluminium frame section doors. For small aluminium sections a range of special adaptors is available.

With **KRABY** 355mm in Automatic S.F. version, once you begin to open the door, it continues to open gently and completely by itself.

## Useful method:

- For aligning nearby doors through the rotary knob placed on the piston base plate.
- To change the time in opening and closing of the door by adjusting the position of the piston base plate within the "U" slot of the side bracket.

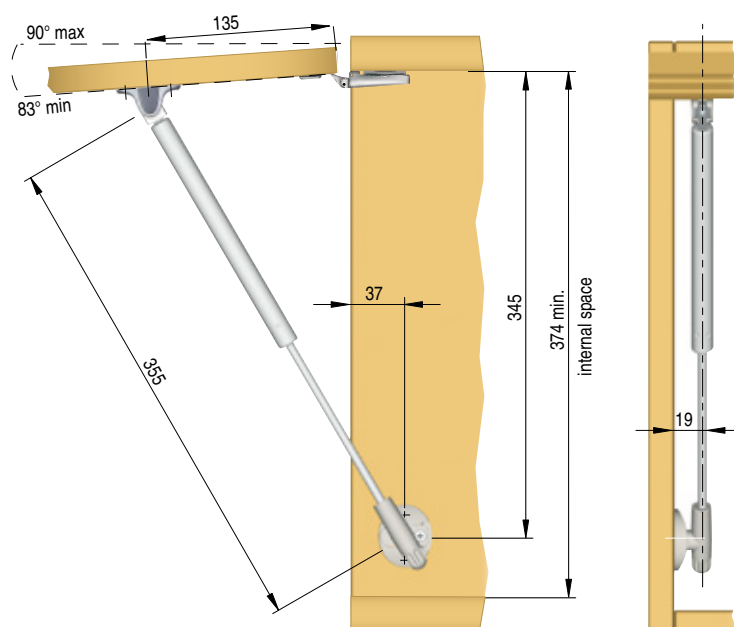
All the parts (stay excluded) are in zinc alloy nickel plated and engineering plastic.

In accordance with Italian regulation UNI 8607

PATENTED

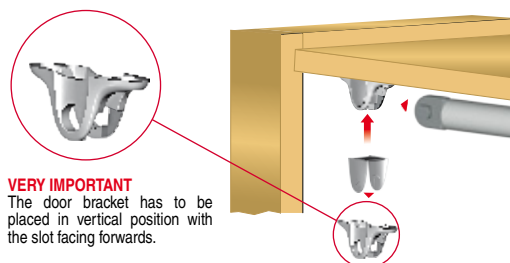


## DRILLING PLAN

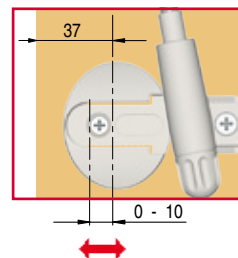


The dimensions of the above drilling plan refer to carcasses which use **standard sprung hinges** and mounting plates 0mm.

## DETAILS

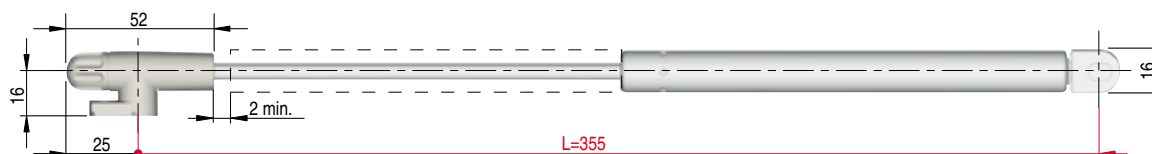


**VERY IMPORTANT**  
The door bracket has to be placed in vertical position with the slot facing forwards.



**VERY IMPORTANT**  
The side bracket has to be placed with the slot in a horizontal position and the open end facing the wall.

## TECHNICAL DRAWING AND CHART TO FIND THE RIGHT STRENGHT



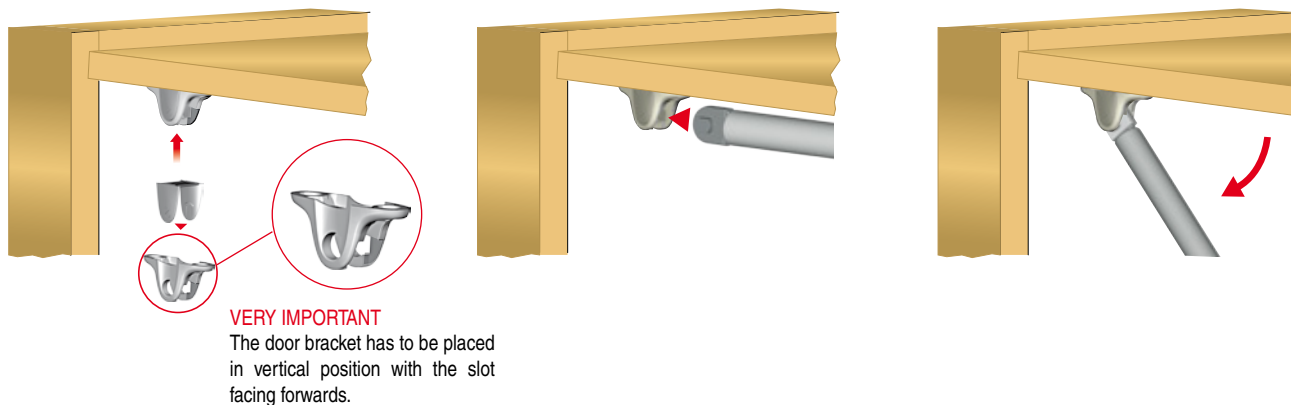
### AUTOMATIC OPENING VERSION

Width door (mm)	450		600		900		1200		1500		1800	
Height door (mm)	Kg	Stays x N	Kg	Stays x N	Kg	Stays x N	Kg	Stays x N	Kg	Stays x N	Kg	Stays x N
400 - 450	2,1 - 2,4	1 x 80	2,8 - 3,2	2 x 50	4,2 - 4,7	2 x 50	5,6 - 6,3	2 x 80	7,0 - 7,9	2 x 80	8,4 - 9,5	2 x 100
451 - 500	2,4 - 2,6	1 x 80	3,2 - 3,5	2 x 50	4,7 - 5,3	2 x 80	6,3 - 7,0	2 x 80	7,9 - 8,8	2 x 100	9,5 - 10,5	2 x 120
501 - 550	2,6 - 2,9	1 x 80	3,5 - 3,9	2 x 50	5,3 - 5,8	2 x 80	7,0 - 7,7	2 x 100	8,8 - 9,7	2 x 120	-	-
551 - 600	2,9 - 3,2	2 x 50	3,9 - 4,2	2 x 80	5,8 - 6,3	2 x 80	7,7 - 8,4	2 x 120	-	-	-	-
601 - 650	3,2 - 3,4	2 x 80	4,2 - 4,6	2 x 80	6,3 - 6,8	2 x 100	8,4 - 9,1	-	-	-	-	-
651 - 700	3,4 - 3,7	2 x 80	4,6 - 4,9	2 x 80	6,8 - 7,4	2 x 120	9,1 - 9,8	-	-	-	-	-

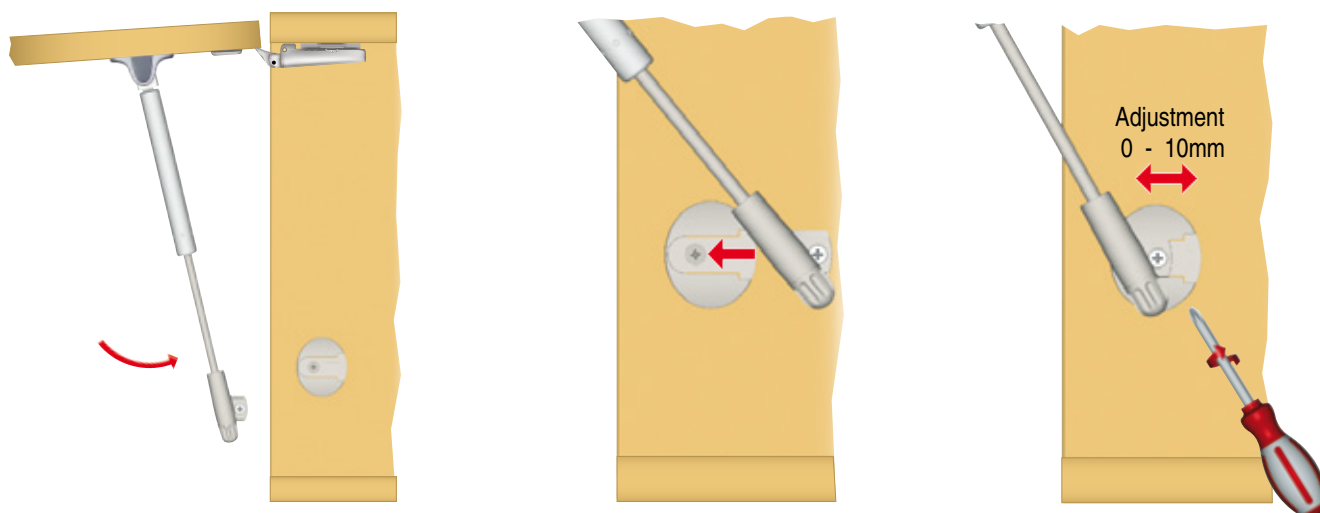
Strenght (N)	50	80	100	120
Part. no	42130010NN	42131010NN	42132010NN	42133010NN

The above charts refer to chipboard or MDF 18mm doors and aluminium frame doors with glass 4mm thick. These are experimental results to be checked by the customer. Our technical department is at your disposal to test further cases out of this chart.

### KRABY INSTALLATION ON THE FLAP DOOR



### KRABY INSTALLATION ON THE INSIDE OF THE CABINET



#### VERY IMPORTANT:

The side bracket has to be placed with the slot in a horizontal position and the open end facing the wall. The opening and closing of the door can be changed by adjusting the position of the piston base plate within the slot:

- **Forwards adjustment** = the door opens automatically later (automatic stay only) and closes automatically in advance (both stays automatic and friction).
- **Backwards adjustment** = the door opens automatically in advance (automatic stay only) and closes automatically later (both stays automatic and friction).

### ADJUSTMENT OF THE DOOR OPENING ANGLE

L (mm)	$\alpha^\circ$
164	$\frac{103^\circ \text{ max}}{83^\circ \text{ min}}$
244	$\frac{94^\circ \text{ max}}{83^\circ \text{ min}}$
355	$\frac{90^\circ \text{ max}}{83^\circ \text{ min}}$
480	$\frac{88^\circ \text{ max}}{83^\circ \text{ min}}$

The door opening angle refer to carcase which use **standard sprung hinges** and mounting plates 0mm.

